

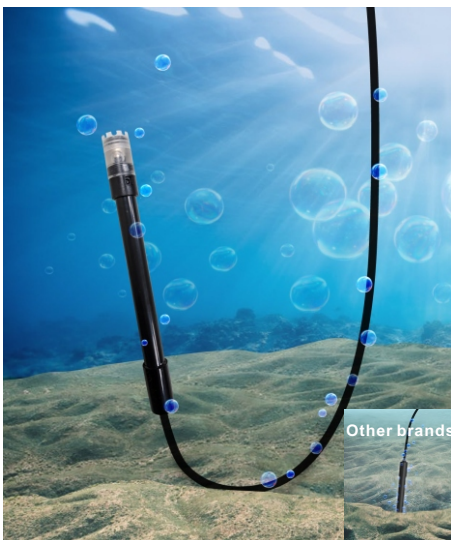
# (PATENTED) DISSOLVED OXYGEN (D.O.) PEN



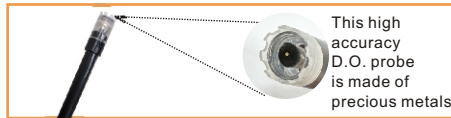
84131

## Patented Design

Clever design to ensure you always get reading from water not from sand



### Standard:



#### D.O. REPLACEMENT PROBE

P/N: VZ84131PAZ  
Size: 15(dia.) x 175mm(l)  
Cable length: 3 meters  
2 pieces of spare membrane kits are included with each probe

### Optional:



#### D.O. REPLACEMENT PROBE

P/N: VZ8413PAZ  
Size: 20(dia.) x 130mm(l)  
Cable length: 3 meters  
with anti-collision cap (55mm L \* 30mm dia.) included

### Ordering Code

**VZ84131AZ, 84131 meter w/84131P D.O. Probe**  
**VZ84131PAZ, 3M long cable floating D.O probe for 84131/8413, w/ 2 spare membrane kits.**

**VZ8413PAZ, 3M long cable D.O probe with protection cap for 84131/8413, w/ 2 spare membrane kits.**

## Dissolved Oxygen Pen w/ long cable floating probe 84131

- Big LCD with D.O. & Temperature display
- 100% D.O. calibration in air. Chemical is not required
- Easy replaceable thin membrane kit with high sensitivity
- Refill electrolyte quickly. Simple to maintain
- Selectable % and mg/L unit for D.O. Value
- °C/°F automatic temperature compensation built-in
- Manual salinity and barometric pressure compensation
- Environment green re-chargable battery via type C port
- Brightness adjustable backlight for dark places



Auto Power Off



Low Battery



HOLD



Auto Temp. Compensation



Metric/Imperial



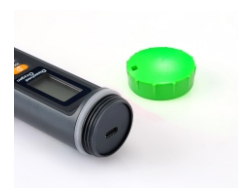
Backlight



IP65



USB TypeC for power charging



Model	84131
DO range (in mg/L)	0.00~20.00 mg/L
DO accuracy	+/-0.4 mg/L
DO resolution	0.01 mg/L
DO range (in %)	0.0~199.9
DO accuracy	+/-3% F.S
DO resolution	0.1 %
Temp. range	0~50.0°C/32~122°F
Temp. accuracy	+/-0.5°C/0.9°F
Temp. resolution	0.1°C
Auto Temp. Compensation	10~40.0°C/50~104°F
Manual Compensation	INCLUDED
Salinity range	0.0~45.0 ppt
Salinity res.	0.1 ppt
Barometric pressure	500~760mmHg/101.3~66.7Kpa
Pressure res.	1mmHg/0.1KPa
LCD size	30(H)x18(W)mm
Operating temp.	0~40°C
Operating RH%	Humidity <85%
Storage temp.	0~40°C
Storage RH%	Humidity < 80%
Sensor response time	<30 seconds for D.O., <90 seconds for Temp.
Sensor warmup time	<60 seconds after power up
Sensor life time	>6 months (with good maintenance)
Dimension	176(L)x39(W)x39(H)
Weight	265g
Battery	3.7V@500mAh re-chargable battery
Power consumption	60 hours operation (no backlight condition)
Re-charging time	1.5 hours
Standard Package	Meter (with bat. Built-in)/D.O. Probe/Electrolyte /2pcs membrane kits/USB-type C charging cable/ hard carry case/manual

