

Stock Bracket Assembly

In this project, you will create the Stock Bracket assembly shown in Figure 1. The details of the components of the Stock Bracket assembly are shown in Figures 2 through 8.

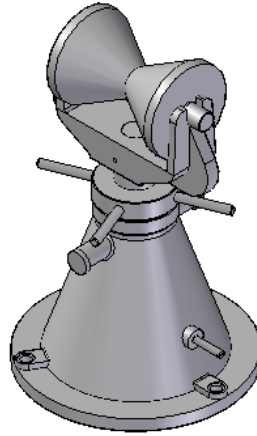


Figure 1 The Stock Bracket assembly

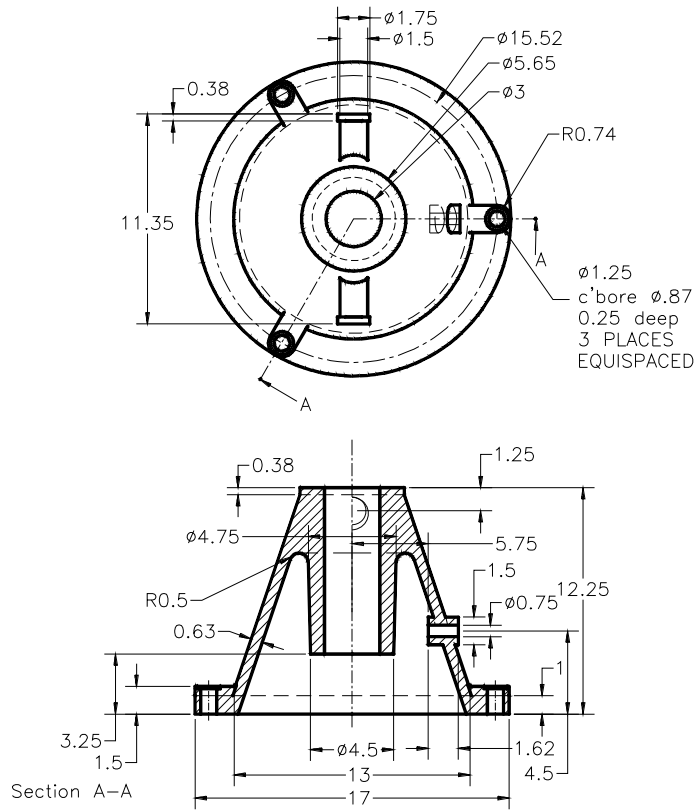


Figure 2 Top and front views of the Stock Support Base

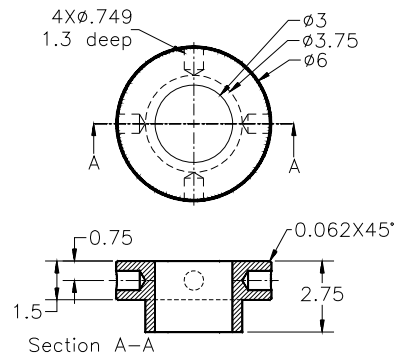
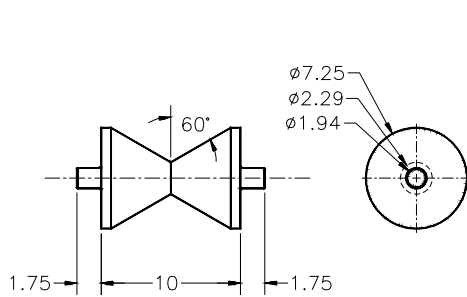


Figure 3 Front and right-side views of the Stock Support Roller

Figure 4 Top and front views of the Adjusting Screw Nut

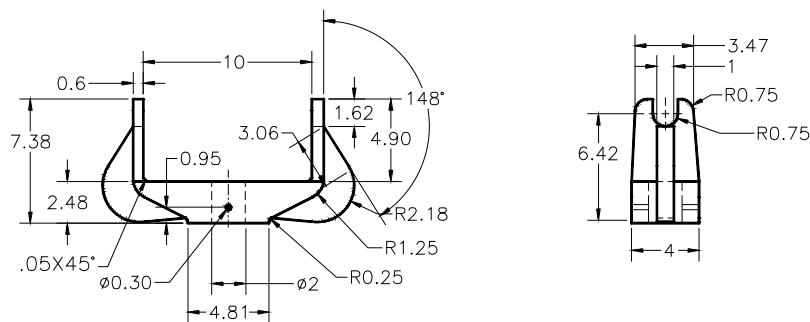


Figure 5 Front and right-side views of the Support Roller Bracket

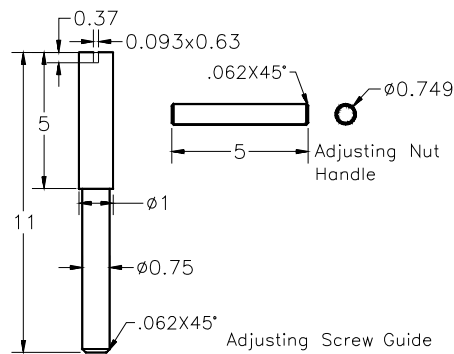


Figure 6 Views of the Adjusting Nut Handle and Adjusting Screw Guide

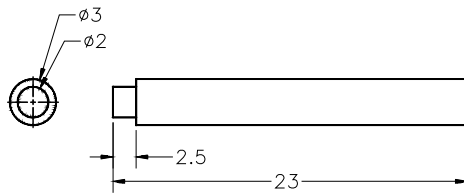


Figure 7 Views of the Support Adjusting Screw

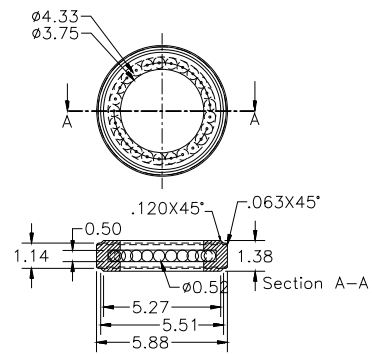


Figure 8 Top and front views of the Thrust Bearing